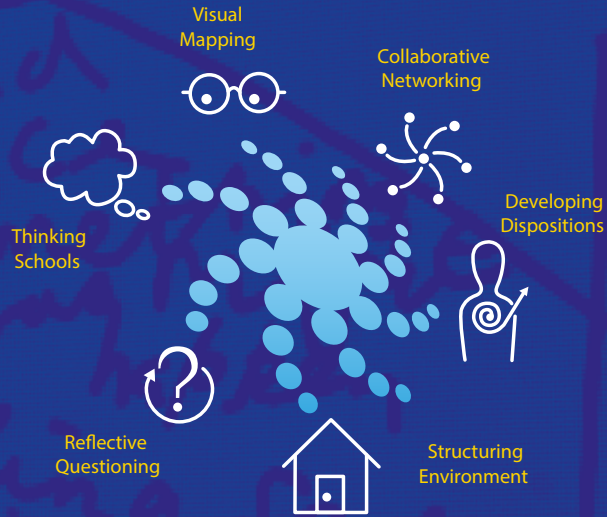


> Our role to help you

While we do offer training in specific programmes and approaches, we also have a more “big picture” role. Our role is as facilitators in the process of working with you as YOU transform over multiple years towards becoming a Thinking School.



The Six Starting Points for Thinking

> Thinking Schools International Egypt (TSI Egypt) enables a unique, whole school approach to the teaching of thinking.

It facilitates the development of learning environments where information is transformed into knowledge - knowledge into ideas - ideas into action.

TSI Egypt is engaging with teachers, schools, educational bodies and countries around the world who want to develop 21st Century learning and thinking environments with proven impact.



Thinking Schools International (TSI) was established in 2010 and is a partnership between Kestrel Education in the UK and Designs for Thinking in the US. **TSI Egypt** signed a partnership agreement in June 2015

Find out more online at
www.thinkingschoolsinternational.com
www.tsiegypt.com

Telephone: (+2) 01099479981
email: admin@tsiegypt.com

Address: The Coach House, Common Platt Purton, Swindon, SN5 5JZ

Egypt: 28 Akaba St., Cleopatra, Alexandria

Growing Thinking Schools from the Inside Out



Transform your School

> **Adopt this whole school approach and see the benefits:**



A Thinking School is 'a learning community in which all members share a common language; where thinking strategies and tools are used across the curriculum and teachers and students have sound understanding of metacognition; where all students are developing and demonstrating independent and cooperative learning skill; where the school generates high levels of achievement and an excitement and enthusiasm for learning.'

"This approach has transformed the way we work at Rochester Grammar School"

Executive Principal
The Rochester Grammar,
Denise Shepherd



Thinking Schools
INTERNATIONAL - EGYPT

"The current focus on developing pupils' thinking skills is making learning more interesting and purposeful and is contributing to the rise in standards"

The training Process will be as follows:

First pathway will be carried on 3 successive days.
Second pathway will be carried on 2 successive days.

Third pathway will be carried on 2 successive days.

TSI Egypt is for educational organisations wanting to develop 21st Century learning environments using thinking skills, tools and techniques. By adopting different pathways for thinking (visual, dispositions and enquiry) this is a unique, sustainable and whole school approach to learning with student centred thinking at its heart.

